

LEVI RESORT, LAPLAND EXCURSIONS, ACTIVITIES AND SAFARIS

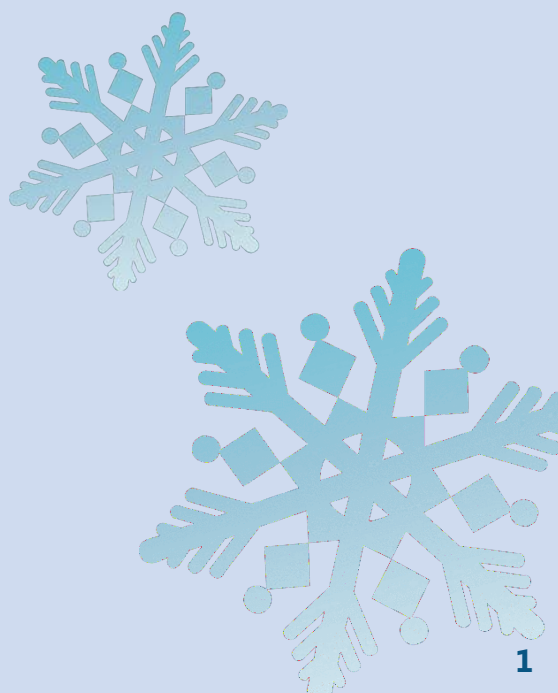


WEEKLY PROGRAMS 1 Sep. 2023 – 30 Apr. 2024



CONTENTS

1. NORTHERN LIGHTS	2	9. SNOWSHOEING	30
<ul style="list-style-type: none">• Visit to Polarman's camp (+Snow Igloo Park)• Northern lights check by car• Aurora chase™ with professional photographer		<ul style="list-style-type: none">• Instagram snowshoeing to Santa's cabin• Easy snowshoeing• Night snowshoeing hunting for aurora	
2. SNOWBUILDING	6	10. LOCAL CULTURE	33
<ul style="list-style-type: none">• Visit to Lainio Snow Village (+dinner in ice restaurant)• Build your own snow igloo		<ul style="list-style-type: none">• Visit to Samiland museum• Visit to Särestöniemi art museum	
3. SANTA CLAUS	9	11. ICE FLOATING	36
<ul style="list-style-type: none">• Day-trip to Santa Claus Village & Rovaniemi "Lite"• Day-trip to Santa Claus Village & Santa Park with lunch• Meet Santa Claus and Mrs. Claus in a secret hideaway		<ul style="list-style-type: none">• Arctic ice floating• Aurora ice floating	
4. ELVES KINGDOM	12	12. HORSE RIDING	38
<ul style="list-style-type: none">• Elves Kingdom and Santa Claus workshop• A magical winter adventure in Elves Village• Visit the Elves Kingdom and explore on your own		<ul style="list-style-type: none">• Icelandic horse riding one hour / two hours• Aurora icelandic horse riding 1,5 h• Icelandic horse sleigh ride	
5. AMAZING HUSKIES	14	13. A DAY-TRIP FROM LEVI	40
<ul style="list-style-type: none">• Animals movie stars and husky park visit• Husky park and musher-driven safari 2 km/4 km• Husky safari self-guided 5 km/10 km/20 km		<ul style="list-style-type: none">• Cruise on icebreaker «Polar Explorer» with lunch and transfer• Trip to arctic Ranua zoo with lunch• King crab safari "Fisherman's dream" (Barents sea, north Norway)• Excursion to Icehotel in Swedish Lapland• Excursion to Norwegian Lapland	
6. EXOTIC REINDEERS	18	14. LEVI RESTAURANTS	46
<ul style="list-style-type: none">• Reindeer safari express• Super reindeer safari 50 min.• Lappish village reindeer safari			
7. SNOWMOBILES	21		
<ul style="list-style-type: none">• Snowmobile safari "Lappish circle"• Night safaris "In search of northern lights"• Family snowmobile safari• Snowmobile safari with ice-fishing and lunch• Snowmobile safari to reindeer farm• Snowmobile safari "Adrenalin"• Electric snowmobile safari day time/ night time			
8. WINTER SPORT	27		
<ul style="list-style-type: none">• Ice Karting (+ lunch)• Snow tubing ticket• Levi fells and forest on e-fatbike with a guide• Hunting for Aurora on e-fatbike with a guide			





NORTHERN LIGHTS

Plan your Aurora Borealis Trip in Levi with Scandinavian Travel Group. Is seeing the Northern Lights in Levi, Lapland high up on your travel wishlist? Turn this dream into your next big adventure with Scandinavian Travel Group guided tours. We'll take you to the best place to see Aurora Borealis. Our expert local guides welcome guests from September through April. During these months the dark, clear skies in the Aurora zone are the perfect backdrop for an unforgettable natural light display.



NORTHERN LIGHTS

ACTIVITIES

VISIT TO POLARMAN'S CAMP

During 1.9 - 30.11.23 and 15.3 - 6.4.24

Duration: 3 h

Northern lights hunting tour at our exclusive place - Polarman's camp

VISIT TO POLARMAN'S CAMP + SNOW IGLOO PARK*

During 1.12.23 - 14.3.24

Duration: 3 h

Aurora hunting tour at Polarman's camp with Snow Igloo Park visit

Description

Welcome to the Polarman's camp - our exclusive place just outside Levi, without tourist buzz, with unobstructed almost 360° sky view, minimum light pollution and warm Aurora dome shelter! You will be met by the Polarman - our storyteller who will be your guide to the mysterious Aurora Hunters world. Get yourself comfortable around the open firepit for an introduction. Follow the Polarman on a beautiful walk along the river. Depending on the program you will visit the unique Snow Igloo park nearby. Crawl into the real snow igloo and hear the Polarman story about the winter survival technique. Having spent some time outdoors, it's nice to warm-up in our Aurora dome, where the temperature stays +15 degrees or higher. Sitting by a crackling fireplace you'll see a movie on a big screen about the Northern Lights and have some hot berry juice or magic drink with some gingerbread cookies. As soon as our guide spots an indication of Aurora we'll invite you outside for taking videos and photos of the Lights with you in it if you wish. We will send them to your email during the following days. It's time to enjoy Lappish BBQ: sit comfortably around the open fire outside and grill sausages. Children usually long to grill marshmallows on the fire.

Suitability

Any physical condition and age

Included

Transfer, guiding throughout the program, photo & video session, sending photos to clients by e-mail, warm-up place in Aurora dome, warm drink (non-alcoholic berry juice or our special magic drink), ginger cookies, movie about Northern Lights, outside firepit sitting area, Lappish BBQ: grilling marshmallows and sausages, arctic toilet

* Snow Igloo Park visit

Important remarks

We do not guarantee that you'll see the Northern Lights on this program, but we do guarantee you the highest chances of seeing it in Levi, while spending an unforgettable evening and experiencing a spirit of winter outdoor Lapland.

Sausages menu: pork (traditional Finnish sausage). Chicken, vegetarian or vegan can be ordered on request at extra charge of 5€.

Recommendation

We recommend wearing warm winter clothing. It can be rented separately before the departure from Safarimarket office in Levi center.

NORTHERN LIGHTS

ACTIVITIES

NORTHERN LIGHTS CHECK BY CAR

Duration: 2 h

Northern lights hunting tour by car/bus

Description

Wild tundra is waiting for you just outside of Levi center. This program is for real enthusiasts of Aurora hunting. We will be driving by automobile/ bus and searching for a place with the clearest sky to enjoy the arctic nature's best show. Clouds and snowstorms can make it difficult to see the Northern Lights. But often even in cloudy weather, we can still see the Lights or a glimpse of it. It takes knowledge of the local weather, patience and persurance. We will visit places in the area of 30-40 km around Levi searching for unobstructed Northern hemisphere sky view and minimum light pollution. Your guide will introduce you to the mysterious Aurora Hunters' world, you will hear some stories and legends about this natural phenomenon. We hope to spot an indication of Aurora, which usually is followed by the most fascinating show of the Arctic nature. We have prepared a warm drink with some gingerbread cookies to help you stay warm.

Suitability

Any physical condition and age

Included

Transport, guiding, warm drink (non-alcoholic berry juice), gingerbread cookies

Not included

Warm winter clothing

Important remarks

We do not guarantee that you'll see the Northern Lights on this program, but we do guarantee you the highest chances of seeing it in Levi, while spending an unforgettable evening and experiencing a spirit of winter outdoor Lapland.

Recommendation

We recommend wearing warm winter clothing. It can be rented separately before the departure from Safarimarket office in Levi center.



NORTHERN LIGHTS

ACTIVITIES

AURORA CHASE™ WITH PROFESSIONAL PHOTOGRAPHER

Duration: 4 h

Professional approach to Northern lights hunting and photography

Description

Join us for an incredible journey into the heart of the Aurora Zone! This program provides you with the best opportunity for witnessing nature's spectacle firsthand. Best of all we will teach you how to take amazing photographs. A quality DSLR camera, SD memory card and tripod are included and no prior photography experience is needed. You will be capturing extraordinary memories to last you a lifetime. The photos and memory card are yours to keep. On this trip you will have safe and comfortable Arctic experience, professional guiding and tuition. Secure your aurora experience with photographs and share with your friends and family. We'll show you how the rhythms of the auroras are enhanced with a few simple techniques. Your guide will be an award-winning landscape photographer. Aurora Chase is suitable also for those with their own cameras and for those who simply want the best opportunity to see the auroras on any given night

Suitability

Any physical condition and age 12+

Included

Transfer, guiding throughout the program, warm and comfortable transport, head torch, 1 Nikon SLR Camera and Manfrotto Tripod, arctic overalls, professional instructions on taking photos of the Northern Lights, refreshments.

Important remarks

The chase can be extended past midnight if conditions are suitable. Alternative times are also available to coincide with the best auroras and weather forecasts.

Like the weather, we have no control over the northern lights, and cannot guarantee their visibility. However, with our support and equipment your chances of an aurora encounter are increased significantly.





SNOWBUILDING

You have to make the most of the snow when you're on an Arctic adventure. This includes having a go at igloo building with a little help from the experts. You must also seize the opportunity to visit a beautiful snow hotel where you can see the architectural wonders of carved and sculpted snow. Scandinavian Travel Group invites you on a range of different snow building tours if you plan to spend time in Levi. These bestselling excursions will give you an idea of what to expect when you touchdown in Lapland.



SNOWBUILDING

ACTIVITIES

VISIT TO LAINIO SNOW VILLAGE

Duration: 3 h

Guided tour to experience the magical world of Lainio Snow Village

VISIT TO LAINIO SNOW VILLAGE WITH DINNER IN ICE RESTAURANT*

Duration: 4 h

Guided tour to experience the magical world of Lainio Snow Village with a 3-course dinner in the ice restaurant

Description

Transfer from Levi center will take about 40 min. Depending on the chosen program you will start with a 3-course dinner in the ice restaurant sat at ice tables and chairs in the beautiful restaurant sculpted from ice and snow. After that you will have a guided tour to experience the magical world of snow and ice. Snow Village is packed with beautifully decorated rooms, sculptures and ice bar. Your guide will give you a fascinating tour where you learn all about the snow construction. A warming juice will be served in the ice bar and you will have time to explore all the wonders of Snow Village at your own pace before returning to Levi. Inside the Snow Village temperature is always around -6° C.

Suitability

Any physical condition and age

Included

Transfer, entrance ticket to Snow Village, guided tour, warm berry juice in cafe or ice bar
*3-course dinner in the ice restaurant

Not included

Warm winter clothing, alcoholic and other drinks in the ice bar or in a café.

MENU

Please note, that, this is the menu for the past is season. We're expecting menu to be published in autumn.

(choose one from each category)

L=Lactose free, G=Gluten free

STARTERS

• LAPLAND TREATS

Reindeer carpaccio, marinated mushrooms, Bothnian whitefish, fennel, cloudberry jam, spruce shoot cheddar, red onion jam, house bread (L,G)

• JERUSALEM ARTICHOKE SOUP

Jerusalem artichokes, apple, nuts (L,G)

• KING CRAB SOUP

Charred Bothnian whitefish, pickled fennel, buttermilk sauce (L,G)

MAINS

• SAUTÉED REINDEER

Sautéed reindeer, mashed potatoes, lingonberry, pickles (L,G)

• REINDEER SERVED TWO WAYS

Local reindeer, celery purée, dark game sauce (L,G)

• FRIED ARCTIC CHAR

Arctic char sauteed in brown butter, parsnip, brown sauce (L,G)

• BEETROOT RISOTTO

Beetroot risotto, pine nuts and kale (L,G, available vegan)

MAINS FOR CHILDREN

• SAUSAGES WITH FRENCH FRIES (L,G)

• SAUTÉED REINDEER & POTATO PURÉE (L,G)

• CHICKEN NUGGETS & FRENCH FRIES (L)

DESSERTS

• CRÉME BRÛLÉE (L,G)

• CHOCOLATE FONDANT

Chocolate fondant, lingonberry ice cream, crispy caramel (L,G)

SNOWBUILDING

ACTIVITIES

BUILD YOUR OWN SNOW IGLOO

During 1.12 - 3.3

Duration: 3 h

Unforgettable experience of building a real snow igloo

Description

Have you ever wondered how to survive in a snowy wilderness with hardly any equipment and make a shelter to overnight in during a snowstorm? We are offering you these new skills through the unforgettable experience of building a real snow igloo, as a team! You will have a professional outdoor guide to arctic wilderness. Our program requires normal physical condition, moderate resistance to the cold, and ability to handle a snow shovel. The program can be offered in nearly any winter weather conditions. The building spot is in the quiet and beautiful nature side. Every snow igloo built on this program contributes to our Snow Igloo park visited by many tourists in Levi. The builders' names and home country can be marked on the outpost sign next to the igloo. Your guide will prepare a warm drink and some snacks for you inside the snow igloo which you built.

Suitability

Normal physical condition, children of age 10+

Included

Transfer, guiding to arctic wilderness, all necessary equipment for snow work, warm winter clothing, mittens, warm drinks and snacks.

Important remarks

Children should be accompanied by adults. We do not recommend this program for children under 10 years old. Please note that thermal clothing is provided for this program.

Recommendation

Not suitable for people with allergy to cold and snow.

We recommend wearing multiple layers of clothes. We will provide you winter thermal overall, boots and also mittens., Please note that we don't rent winter hats and scarfs, so bring your own.





SANTA CLAUS

You can't travel all the way to the Arctic Circle without meeting Santa Claus in Lapland. A trip to see Father Christmas in Lapland will be an experience you will never forget. We have an exciting range of excursions for meeting Santa Claus in Lapland that the whole family will love. Try a wonderful day trip to Santa Claus village and Santa Park nearby Rovaniemi, or go meet the Santa at his secret hideaway in Levi.



SANTA CLAUS

ACTIVITIES

DAY-TRIP to SANTA CLAUS VILLAGE AND ROVANIEMI "Lite"

Duration: 9 h

DAY-TRIP TO SANTA CLAUS VILLAGE AND SANTA PARK WITH LUNCH*

During 11.11 - 13.1

Duration: 10 h

Description

Day-program will start with road trip from Levi to Santa Claus Village on the Arctic Circle, Rovaniemi (2 h, 170 km) and will be accompanied by our guide. He will give you a short presentation of the Village and after that you will cross the official Arctic Circle line on your way to the entrance door to the Santa Claus office and receive your Diploma for crossing the Arctic Circle. Finally, you will have a meeting with Santa in his office. You will also visit the Official Santa Claus Post office, where you can send a postcard to your friends and family and order a letter from Santa to your beloved ones for the next Christmas. Here we will have some free time, you can visit souvenir shops in the village or grab a bite to eat or drink. After that depending on the chosen program you can visit Rovaniemi city or Santa Park.

*Santa Park is located just couple of minutes away from the Santa Claus Village. Your entrance ticket to Santa Park covers all the fun attractions inside. In Santa Park restaurant you will have a lunch. Deserts, coffee and additional drinks need to be paid separately.

After the program you will get in the bus and head back to Levi in time for dinner.

Suitability

Any physical condition and age

Included

Transfer, guiding, regular entrance to Santa Claus office, personal Diploma of crossing the Arctic Circle.

* Entrance ticket to Santa Park and buffet lunch in the restaurant of Santa Park or in the Santa Claus Village.

Not included

Photos & videos with Santa Claus in his office

Important remarks

During the standard visit to Santa Claus Office it is not allowed to take photos with your own cameras or phones inside the office. A Professional elf photographer will take the photos and videos and you can buy them at the Office exit. In all other places of Santa Claus Village you can take photos.

*Full list of activities included in the entrance price to Santa Park you can find in the product card on our web pages. There is a separate charge for having a professional photo with Santa Claus taken in his Santa Park chamber. But you can also take photos with your own camera.

Recommendation

Special warm clothing usually is not needed on this tour, as you will spend most of the time indoors. If needed it can be rented separately from the Safarimarket office in Levi center. Otherwise normal winter clothing is enough.



SANTA CLAUS

ACTIVITIES

MEET SANTA CLAUS AND MRS. CLAUS* IN A SECRET HIDEAWAY IN LEVI

Duration: 2 h

Exclusive meet Santa Claus program in Levi

Description

Santa Claus has a secret hideaway where together with his reindeer Rudolf he takes a break from busy days. Here in a country-side family atmosphere on the bank of river, in his cozy Christmas house, Santa spends evenings meeting his friends from around the world. There will be no queues in his place, because the program is arranged exclusively just for our group. Luckily the place is located within 15 min reach from Levi. Upon arrival, you will walk thru a winter path to enter Santa's hideaway. Missis Claus with Elves will invite all the guests inside Santa's Christmas house, where all will sit around crackling fire stove listening to Santa telling a Christmas story. Every child gets a chance to privately talk to Santa, sit on his knee, touch his beard, whisper own secret wishes for Christmas and of course, finally gets a present. Afterwards all the guests together with Santa will sing a Christmas song together and children will learn from Mrs. Claus how to bake and decorate gingerbread cookies.

Suitability

Any physical condition and age

Included

Transfer, elf-guiding, Mrs. Claus gingerbread making workshop (in December - January only), gingerbread cookies and traditional Finnish Christmas mulled wine drink, secret gift from Santa for every kid

Not included

Personal gifts can be arranged in advance. If you want Santa to give a special gift to your child on this program, please arrange it at least on the day before, as we have special communication with the Santa Claus.

Important remarks

*During November and February program is arranged without participation of Mrs. Claus and workshop of making gingerbread cookies. Otherwise all "ingredients" remain the same.





ELVES KINGDOM

Elves Hideaway was kept a secret from mankind for a long time. Today we have the Elves pleasure to invite you to step into the Elves Fantasy World. Visit the Elves Hideaway is a unique Christmas program for both children and adults only available in Levi. The Hideaway lies on the bank of the longest river in Lapland and hidden from the people's eyes by the magic forest. Once the bus turns off the main road, thousands of candles and Christmas lights will guide the way to the Elves Hideaway.



ELVES KINGDOM

ACTIVITIES

ELVES KINGDOM AND SANTA CLAUS WORKSHOP*

During December - January
Duration: 3,5 h

A MAGICAL WINTER ADVENTURE IN ELVES VILLAGE

Duration: 2,5 h

Description

Upon arrival you will be greeted by the elf and will get a secret map of the area that will lead you through the wintery forest and a magic Seita stone (the cave of goblins, gnomes and other magical forest creatures) to the Elves' Hideaway. In the Gingerbread house you will bake delicious gingerbread cookies and at Elves's school you will make Christmas decorations and not to mention a visit to the Wise Elf's house. On the way the elves are helping you to find these magic places and telling you more about their life in the Elves Village. Outside you can do tobogganing and finally visit the reindeers and sheeps that live in the area. You may have a peak to the Elves storehouses, The Temple, Riverside Sauna and Blacksmith's workshop. In the Elf Shop you will find the best souvenirs and gifts.

ACTIVITIES AT THE ELVES HIDEAWAY

- A fairytale session in the Wise Elf's House
- Bake Gingerbreads in the Gingerbread House
- Crafts at Elves School
- Stories of the life of goblins in the Seita Stone

* In Santa Claus workshop program you will have also a meeting with Santa Claus himself. Traditional rice porridge with sweet raisin soup will be served in cafe at the end of the program.

Suitability

Any physical condition and age

Included

Guiding, all the activities with Elves, warm drinks, baking ginger biscuits, making Christmas decorations traditional kick sledges, tobogganing, *meeting with Santa Claus, traditional Christmas porridge with raisin soup, visiting reindeer fence.

Not included

Warm winter clothing, gifts from Santa Claus.

Important remarks

* Private meeting with Santa is 5 min. You can bring your letter to Santa by yourself. Photos and videos are allowed. Adults can stay during the program in Elves' cafe where it's possible to buy snacks, meals and drinks (bar has a full alcohol license) and souvenirs.

Recommendation

We recommend wearing warm winter clothing. It can be rented separately before the departure from the Safarimarket office in Levi center.

Optional

You can also visit the elves kingdom and explore it on your own. We offer entrance ticket to Elves hideaway.

Please note, that the self-guided tour does not include activities at the Gingerbread House, the Elf School and the Wise Elf's House! These buildings are only busy according to the program.



HUSKY PARK

One of the most popular husky destinations in Levi belongs to the famous Finnish musher Reijo Jääskeläinen. This excursion takes you to one of the oldest husky kennels in Finnish Lapland, where you will meet Siberian huskies of different ages, arctic fox, brown foxes, tundra wolves, mixed dog-wolfs, spitz and the cutest little puppies.



HUSKY PARK

ACTIVITIES

ANIMALS MOVIE STARS AND HUSKY PARK VISIT

1.10 - 30.11.23; 1.4 - 30.4.24

Duration: 2 h

HUSKY PARK AND MUSHER-DRIVEN SAFARI 2KM OR 4KM*

Duration: 2 h

Description

As we drive to the kennel from Levi, our guide will share with you some interesting facts about huskies. During a kennel tour you will meet genuine Siberian huskies, arctic foxes, brown fox, tundra wolves, mixed dog-wolfs and puppies. Depending on the chosen program you will go on a husky ride with professional musher. You will be seated in a sleigh and enjoy a thrilling husky ride. Musher will stand behind you on the runners and you will get a feeling that dogs are pulling you on their own discretion. Track goes through the beautiful winter forest and lake sceneries. After the ride you will meet the kissing reindeer Taika, can take some photos with the dogs, and finally go inside a warm Laplander's hut where you can enjoy a warm drink and cookies, sit next to the fireplace, watch a movie about husky life and buy some local souvenirs.

Suitability

Any physical condition and age

Included

Transfer, guided tour around animal park, gingerbread cookies and traditional Finnish hot berry juice or coffee, cookies, reindeer kiss.

*2km/4km musher-driven husky safari, hot sausage

Not included

Warm winter clothing. It can be rented separately before the departure from the Safarimarket office in Levi center.

Important remarks

Please take off your gloves/mittens when touching the huskies and other animals! They love to play with gloves and might break it easily, especially beware of the fox as she steals the gloves to hide them. Do not be afraid of the dogs, as they are genetically friendly to people.

Sit quietly in a sleigh and do not take your arms and legs outside the sleigh, always follow the instructions given by a musher.





HUSKY SAFARI

Do you want to have a go at driving the sled yourself?

We offer self-guided husky safari experiences in one of the 3 kennels located 20-25 min drive from Levi. In all kennels owners are professional sport dog mushers and have specially trained Arctic-Alaskan breed huskies. There are over 50 dogs in each kennel, including some Siberian huskies and puppies.



HUSKY SAFARI

ACTIVITIES

HUSKY SAFARI SELF-GUIDED 5 KM

Duration: 2,5 h

Approximate safari duration is 20-30 min

HUSKY SAFARI SELF-GUIDED 10 KM*

Duration: 3 h

Approximate safari duration is 35-45 min

HUSKY SAFARI SELF-GUIDED 20 KM**

Duration: 4 h

Approximate safari duration is 1,5-2 h

Description

We use 3 husky-kennels, located about 30 min drive from Levi. In all kennels owners are professional sport dog mushers and have specially trained Arctic-Alaskan breed huskies. This breed was created by cross-breeding in Alaska especially for dog racing during the Gold rush period. There are over 50 dogs in each kennel. Upon arrival, you will get complete instructions of driving (guiding) the dog sledge on your own and then start the safari. The track lies partly in the beautiful winter forest and partly on a frozen river (depending on the kennel) During the stop-over musher and passenger can change places. After the ride you can walk around kennel, pet the dogs and take photos with them. You can warm up Inside a cozy teepee around the open fire, have a hot drink with cookie and listen host telling stories about life with the dogs and answering questions.

Suitability

Normal physical condition, children age 7+

*children age 9+, ** children age 12+

Included

Transfer, guiding, self-guided husky safari, cookies and hot berry juice

Not included

Meals, warm winter clothing

Important remarks

Please always bear in mind that one sledge can take max. 2 adults + 1 small child (under 7 y.o.). Final decision about seating is taken by the host on the spot, as it can depend on participants weight, height, etc.

When you're 2 persons: 1 adult + a child older than 7 y.o., both must pay adult price.

When you're 3 persons: 2 adults + a child older than 7 y.o., one of the 3 persons (possibly a child) will seat as a passenger in another sledge, driven by a guide. Single driving may be available for a supplement.

Recommendation

We recommend wearing warm winter clothing. It can be rented separately before the departure from the Safarimarket office in Levi center. In cold weather, we recommend applying no-water based winter cream for face and cover tightly open skin areas.



REINDEER SAFARI

Reindeer are a much-loved symbol of Lapland. There are around 200,000 reindeers in Finnish Lapland. We offer different reindeer safari experiences including a reindeer farm visit for those who want to get a better feel for the culture and traditions of Lappish life. If you want to slow down the pace and take a tranquil trek through beautiful snowy scenery, a traditional reindeer ride in Lapland is the only way to travel.



REINDEER SAFARI

ACTIVITIES

REINDEER EXPRESS SAFARI

Duration: 2 h

SUPER REINDEER SAFARI 50 MIN*

Duration: 2,5 h

Description

On this excursion we will take you to a reindeer farm owned by one Lappish family in the fifth generation. It lies on the bank of the longest river in Lapland and is surrounded by taiga forest. Depending on the chosen program you will go for a short 10 min or longer 50 min ride on reindeer sled thru a beautiful winter forest at relaxed pace. From the early morning the reindeer herder starts to prepare for the safari: harness reindeers and sleds, puts extra warm reindeer skins for the passengers, makes fresh tea and coffee, bakes fresh buns... After the ride you will be able to take photos with the reindeers and feed them with lichen, reindeer's favorite treat. Then a cup of warm drink in a warm guest cafe by an open fireplace will feel good. You can buy a pastry in the café and check out local hand-made souvenirs and look around the farm, which has many old buildings dated back to 19th century. The owner can tell you more interesting stories.

Suitability

Any physical condition and age

Included

Transfer, guiding, hot drink (berry juice/coffee/tea)
* home-made pastries

Not included

Warm winter clothing

Important remarks

Reindeers are semi-wild animals and even being used to living next to people, they are quite shy and can be unpredictable. Please always follow the instructions given by the guide and try to be calm and careful when close to the reindeers.

Recommendation

We strongly recommend wearing warm winter clothing. It can be rented separately before the departure from the Safarimarket office in Levi center.



REINDEER SAFARI

ACTIVITIES

LAPPISH VILLAGE REINDEER SAFARI

Duration: 2 h

Reindeer ride at the old reindeer farm that dates back more than 150 years, after which you can taste warm berry juice in the old café

Description

Fun program for the whole family. You'll get a bunch of memorable experiences of Lappish reindeer herders' culture on this short program. You will visit an old reindeer farm that dates back more than 150 years. It lies on the bank of the longest river in Lapland and is surrounded by taiga forest. You will be guided to the reindeer sleds and go for a reindeer ride (about 1 km) through the beautiful pine forest. Your local host will take you inside the reindeer corral, where you can experience a "reindeer therapy" - close encounter with young reindeer calves. You'll be able to take pictures with the reindeers and feed them with lichen. You can also check out old buildings around the farm, which have a nice collection of old Lappish artifacts from the reindeer herders. After the ride, you can taste Finnish warm berry juice in the old café and buy fresh home-made donuts (traditional "munkki" in Finnish) or other snacks, souvenirs from reindeer antlers and conserves from local berries.

Suitability

Any physical condition and age

Included

Transfer, guiding, hot berry juice

Not included

Warm winter clothing

Important remarks

Reindeers are semi-wild animals and even being used to living next to people, they are quite shy and can be unpredictable. Please always follow the instructions given by the guide and try to be calm and careful when close to the reindeers.

Recommendation

We strongly recommend wearing warm winter clothing. It can be rented separately before the departure from the Safarimarket office in Levi center. Please provide shoe, trouser and jacket sizes in advance.





SNOWMOBILING

Local Lappish people claim that snowmobiling is the best way to see the beauty of the Arctic region. You can cover a lot of snow-covered ground in a short space of time thanks to the snowmobiles in Levi, Lapland. Experienced riders and beginners can have enormous amounts of fun on these vehicles that are specifically designed for driving over thick snow and frosty winter landscapes. Those who don't want to drive a snowscooter on their own can ride as a passenger if their minimum height is 130 cm.



SNOWMOBILING

ACTIVITIES

SNOWMOBILE SAFARI "LAPPISH CIRCLE"

Duration: 2,5 h

Daytime snowmobile safari through snow covered forests and lakes near the Levi fell with a stop-over for a hot drink

FAMILY SNOWMOBILE SAFARI

Duration: 3 h

Daytime snowmobile safari, after final stop kids can drive mini-snowmobile in a private area under a supervision of a guide. Hot drink and grilled sausage by the open fire

NIGHT SAFARI "IN SEARCH OF NORTHERN LIGHTS"

Duration: 3 h

This evening snowmobile safari takes us across fields and through the wilderness, hoping to see aurora borealis dancing in the sky. We will arrive to the lean-to-shelter, where we will sit next to campfire and have a cup of warm drink and a grilled sausage

Description

The tour will start at a local safari house in Levi, where you will change into gear, guaranteed to keep you warm and dry during the safari, including overall, boots, helmet and gloves. Once equipped, a guide will give you brief instructions, and off you go! During the safari, we will have a stop-over for hot drinks.

Suitability

Normal physical condition, children age 6+

Family safari - children age 4+

- Kids' snowmobile for children 80-120 cm height/ max. 40 kg weight/ 3-12 y.o.
- Teenager snowmobile for bigger kids up to 150 cm height and 60 kg weight/ 10-16 y.o. * subject to availability

Included

Transfer, guided safari, warm clothing, boots, helmet, gloves/mittens, socks, scarfs, hot drink, grilled sausage - depending on program

Important remarks

Standard price is given for one person on a double snowmobile or in a sledge. Solo driving is available at a supplement. Child price is valid for a child under 130 cm seated in a sleigh. Sledge is always pulled by the guide's snowmobile. Sledge is open top and can take up to 8 persons. It's advisable that a small child seated in a sleigh is accompanied by an adult.

According to Finnish law, to drive a snowmobile one should be at least 15 years old and have a valid driver's license of category B, T, A1 or A (i.e. car or motorbike). Alcohol tolerance is zero, drivers will have to pass an alcohol test before the safari. Insurance covers accidents with a maximum driver excess of 800€. You can buy a waiver on the spot for 20€ to lower the excess to 300€.

Recommendation

We recommend wearing thermo body-wear + multilayer clothing and woolen socks.

SNOWMOBILING

ACTIVITIES

SNOWMOBILE SAFARI WITH ICE-FISHING

Duration: 4 h

"2-in-one" package snowmobiling and ice-fishing experience

Description

The tour will start at a local safari house in Levi, where you will change into gear, guaranteed to keep you warm and dry during the safari, including overall, boots, helmet and gloves. Once equipped, a guide will give you brief instructions, and off you go! You will drive snowmobiles on a curved trail in a snowy forest and arrive to a taiga lake to try ice-fishing! The local instructor will help to drill a hole in the ice, give you all the fishing gear and professional fishing advice. During the stop-over your host will offer you a snack and warm drink. You will return by snowmobile back to the village.

Suitability

Normal physical condition and age 8+

Included

Transfer, guided safari, warm clothing, boots, helmet, gloves/mittens, socks, scarfs, fishing equipment, hot drink and snack

Important remarks

Standard price is given for one person on a double snowmobile or in a sledge. Solo driving is available at a supplement. Child price is valid for a child under 130 cm seated in a sleigh. Sledge is always pulled by the guide's snowmobile. Sledge is open top and can take up to 8 persons. It's advisable that a small child seated in a sleigh is accompanied by an adult.

According to Finnish law, to drive a snowmobile one should be at least 15 years old and have a valid driver's license of category B, T, A1 or A (i.e. car or motorbike). Alcohol tolerance is zero, drivers will have to pass an alcohol test before the safari. Maximum speed limit is 60km/h and 80km/h on the lakes.

Insurance covers accidents with a maximum driver excess of 800€. You can buy a waiver for 20€ to lower the excess to 300€. Waiver is available to buy only on the spot.



SNOWMOBILING

ACTIVITIES

SNOWMOBILE SAFARI TO REINDEER FARM

Duration: 3-4 h

Combined safari snowmobiling and short reindeer ride

Description

The tour will start at a local safari house, where you will change into gear and guide will give you brief instructions of driving snowmobile. Within 1 hour you will arrive to the old reindeer farm there you will get a bunch of memorable experiences of Lappish reindeer herders' culture. You will go for a short reindeer ride through the beautiful pine forest. You will be able to take photos with the reindeers and feed them with lichen. After the ride, you can taste Finnish warm berry juice in the old café and buy fresh home-made donuts, souvenirs from reindeer antlers and preserves from local berries. At the end you will return by snowmobiles back to Levi (1h).

Suitability

Normal physical condition and age 8+

Included

Transfer, guided safari, short reindeer safari, warm clothing, boots, helmet, hot drink.

Important remarks

Standard price is given for one person on a double snowmobile or in a sledge. Solo driving is available at a supplement. Child price is valid for a child under 130 cm seated in a sleigh. Sledge is always pulled by the guide's snowmobile. Sledge is open top and can take up to 8 persons. It's advisable that a small child seated in a sleigh is accompanied by an adult.

According to Finnish law, to drive a snowmobile one should be at least 15 years old and have a valid driver's license of category B, T, A1 or A (i.e. car or motorbike). Alcohol tolerance is zero, drivers will have to pass an alcohol test before the safari. Maximum speed limit is 60 km/h and 80 km/h on the lakes.

Insurance covers accidents with a maximum driver excess of 800€. You can buy a waiver for 20€ to lower the excess to 300€. Waiver is available to buy only on the spot.



SNOWMOBILING

ACTIVITIES

SNOWMOBILE SAFARI "ADRENALIN"

Duration: 3,5 h

Snowmobile safari over and around Levi for the experienced drivers

Description

The tour will start at a local safari house, where you will change into gear and guide will give you brief instructions of driving snowmobile. Total trip distance is about 60km. The purpose is to circumnavigate Levi Fell and see all its best sides. At the top of Levi Fell, we can stop to take some photos. This is the true fascination of Lapland. And we get more of it, when we stop by an old wooden house to enjoy some traditional Lappish coffee by the open fire. The trek home is downhill all the way, relaxing and simply flashes by.

Additional options on the tour:

Soup lunch in a warm café along the route.

Suitability

Normal physical condition and age 18+

Included

Transfer, guided safari, warm clothing, boots, helmet, gloves/mittens, socks, scarfs, hot drink

Important remarks

Standard price is given for one person on a single snowmobile. Driving with 2 persons on one snowmobile is not available on this program. No double snowmobiles and no sledges will be used on this program.

According to Finnish law, to drive a snowmobile one should be at least 15 years old and have a valid driver's license of category B, T, A1 or A (i.e. car or motorbike).

Alcohol tolerance is zero, drivers will have to pass an alcohol test before the safari. Maximum speed limit is 60 km/h.

Insurance covers accidents with a maximum driver excess of 800€. You can buy a waiver for 20€ to lower the excess to 300€. Waiver is available to buy only on the spot.



SNOWMOBILING

ACTIVITIES

ELECTRIC SNOWMOBILE SAFARI. DAY TIME

Duration: 2 h

ELECTRIC SNOWMOBILE SAFARI. NIGHT TIME*

Duration: 3 h

Description

Silent eSleds offer an environmentally sustainable way to enjoy clean and fresh Arctic nature on our safaris. The eSled is very easy to drive for beginners due to its special electric drive and user-friendly operation. eSled tours are specially designed for a silent and emission-free safari experience. Follow experienced wilderness guide to white forest with eSleds and learn how to master the vehicle on snow. Even the snowmobiles are nature friendly it does not take away any of the fun!

*Evening program on electric snowmobiles with an opportunity to see Northern lights and stop over for grilling sausages on the open fire.

Suitability

Normal physical condition and age 4+

Included

Transfer, guided safari, warm clothing, boots, helmet, gloves/mittens, socks, scarf
*sausage grilling, flat bread, pastry

Not included

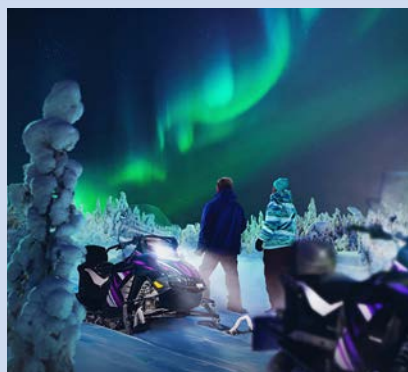
Snacks

Important remarks

Standard price is given for one person on a double snowmobile or in a sledge. Solo driving is available at a supplement. Child price is valid for a child under 140 cm seated in a sleigh. Sledge is always pulled by the guide's snowmobile. Sledge is open top and can take up to 8 persons. It's advisable that a small child seated in a sleigh is accompanied by an adult.

According to Finnish law, to drive a snowmobile one should be at least 15 years old and have a valid driver's license of category B, T, A1 or A (i.e. car or motorbike). Alcohol tolerance is zero, drivers will have to pass an alcohol test before the safari. Maximum speed limit is 60 km/h.

Insurance covers accidents with a maximum driver excess of 1000€.





WINTER SPORT

Experience beautiful Lappish nature of Levi by exploring it on an e-fatbike during day or evening time. Thanks to the electric motor and wide tires on the bikes riding on snow is easier than you might imagine. Need for more speed? Enjoy thrill of speed on ice karting program. Kart driving might be familiar to you, but driving a go-kart with studded tires on the ice track is something completely different; an experience out of this world!



WINTER SPORT

ACTIVITIES

ICE KARTING STANDARD PROGRAM

Duration: 1,5 h

Program includes two driving sessions and a break with a hot juice.

ICE KARTING COMPETITION PROGRAM

Duration: 1,5-2 h

Private race program

Description

Ice-karting track is located just 5 min away from the village. Upon arrival you will go inside the warm house for brief safety instructions rules and driving tips. You will change to winter-racing gear, including helmets, hoods, shoes, gloves and overalls. Then you will head to the ice-track with up to 8 go-karts equipped with studded tires and silent four-stroke engines.

Standard program includes driving a go-cart 2 laps 15 min each with a 15 min break in between.

Private competition program includes two driving sessions, qualifications and a final race. After the race we will hold a prize ceremony. A break with hot juice is also included. Note, this program is always private for your group. Hot juice is served throughout the event by the open fire outdoors.

Included

Transfer, guiding, hot drink (berry juice/ coffee/tea), cookies

Not included

Meals

Suitability

Normal physical condition and minimum height requirement 140cm

Important remarks

One must be min. 140cm tall to drive a go-cart (to reach the pedals). Maximum weight of a driver - 100 kg. Driving is not allowed during pregnancy or when injured. Alcohol tolerance is zero, drivers will have to pass an alcohol test. Driving license is not needed to participate. Spectators can join the program depending on available transport capacity subject to supplement charge.

Recommendation

You will get warm winter clothing and boots before on the spot.

Additional options on the tour:

• SOUP LUNCH IN A WARM CAFÉ

Soup, bread and butter, coffee or tea

• SNOW TUBING

Two colorfully lit slides of different lengths offer good fun for everyone of all ages.

Tickets are valid for 2 hours of sliding starting from the departure time on the area.

WINTER SPORT

ACTIVITIES

LEVI FELS AND FOREST ON E-BIKE WITH A GUIDE

Duration: 3 h

Experience the arctic nature in Levi by exploring it on an e-fatbike

HUNTING FOR AURORA ON E-FATBIKE WITH GUIDE

Duration: 3 h

Experience the arctic nature in Levi by exploring it on an e-fatbike

Description

After a short introduction to an electric fatbike, you will follow our guide on this safe adventure trip thru the Lappish terrain. We will be driving by the foothills of one of the largest mountains in Levi area - Kätkätunturi. After about 30 min of driving, you will stop for a break with a hot drink and a small snack. After the break, you will return to the starting place by a different route. If necessary, we can arrange a return transportation from the break point by car (extra charges apply). The area of Kätkätunturi is a nature protected area, where you can spot wildlife and reindeers.

*During the trip you also get a good chance to spot the Aurora, as we will be driving thru open area with no light pollution. At your our stopover place there is an unobstructed Northern hemisphere sky view. Your guide will tell some stories and legends about this natural phenomenon. We will be keeping our eyes on the sky all the time. As soon as we spot an indication of Aurora, we will invite you to enjoy the most fascinating show of the Arctic nature.

Suitability

Normal physical condition and age 10+

Included

Guiding along the way, instructions on handling the equipment, hot drink (coffee/tea) and small snack

Not included

Warm winter clothing

Important remarks

* We do not guarantee that you'll see the Northern Lights on this program, but we do guarantee you the highest chances of seeing it in Levi, while spending an unforgettable evening and experiencing a spirit of winter outdoor Lapland.

Recommendation

We recommend wearing warm winter clothing. It can be rented separately before the departure from the Safarimarket office in Levi center.

Additional option on the tour:

• E-FATBIKE RENTAL FOR DAY 10-17

E-fatbikes makes your trip more easy. You can switch the electric power for 3 different levels or take it off. Fatbikes will be delivered to your accommodation at 10:00AM for day and we will pick them up 17:00PM.



SNOWSHOEING

If you enjoy walking or regular hiking, why not try snowshoeing in Lapland? Snowshoeing is a popular winter activity because it is more practical to explore a snow-covered landscape when you are wearing the correct footwear. This form of hiking allows you to roam easily across deep snow and walk up and downhill the mountain. As you hike out in nature, you also get to enjoy the fresh air and exercise.



SNOWSHOEING

ACTIVITIES

INSTAGRAM SNOWSHOEING TO SANTA'S CABIN

Duration: 2,5 h

Snowshoeing to one of the most "Instagrammable" places is Finland - Santa's cabin

Description

You will meet the guide, check the equipment and head for the top of Levi fell: first by car to the bottom station of Gondola lift and then ride on Gondola to the top of the mountain. Sometimes when Gondola lift is closed due to the weather, we will drive up to the mountain top by car. You'll put on the snowshoes and start a moderately easy hike thru the most photographed and scenic places of Levi. You will ascend to the top point of Levi, then make a loop and go to visit Santa's cabin. Santa's secret cabin in Levi has become one of the most "instagrammable" places in Finland. It was built for a Finnish movie "Joulutarina" ("Christmas story") as a house of Santa Claus. During the winter the snow-covered hut looks like a fairy tale sugar house. Then you will continue an easy descent on the snowshoes through a winter forest. Soon you will reach a kota (tepee), where you will grill a sausage on the open fire and have hot berry juice. After a break, still a downhill walk to the place, where you'll be picked up for a transfer back to Levi.

Suitability

Normal physical condition and age 8+

Included

Transfer, gondola ride to the top of Levi fell (or by car - weather dependent), professional outdoor guiding, snowshoes, hot berry juice, grilled sausage in Finnish wilderness hut

Not included

Warm winter clothing

Important remarks

Although snowshoeing seems easy, the program requires a normal physical condition, and can be compared to cross-country biking about 5-10 km distance. Snowshoes come in one size, fits all, just attach them on your own shoes and you're ready to go.

Recommendation

We recommend wearing warm winter clothing. It can be rented separately before the departure from the Safarimarket office in Levi center.



SNOWSHOEING

ACTIVITIES

EASY SNOWSHOEING

Duration: 2 h

Snowshoeing at the foothill of Levi (easy level)

NIGHT SNOWSHOEING HUNTING FOR AURORA*

Duration: 2,5 h

Snowshoeing northern lights hunting on the top of the Levi fell

Description

You will meet the guide, check the equipment and clothing and go by foot to a starting place nearby. At the foothill of Levi, you'll put on the snowshoes and start an easy hike on a 4-5 km loop winter track alongside the Levi fell. On your way you might spot some wildlife, like rabbits, snow grouses and foxes and see beautiful Lappish winter nature. When you start feeling a bit tired and thirsty, we'll have a break: sip on a traditional Finnish hot berry juice and talk about the nature and life in Lapland. When ready, you will continue hiking back to Levi.

*Night snowshoeing offers a good chance to see Northern Lights and to marvel the landscape and the night sky, which may be filled with thousands of stars and the moon. After checking the equipment we will go by car up the Levi fell. We'll take a break and have a warm berry juice and talk about the nature and life in Lapland. After we will continue walking downhill back to the Levi center.

Suitability

Normal physical condition and age 8+

*age 12+

Included

Transfer, professional outdoor guiding, snowshoes, hot berry juice

Not included

Warm winter clothing

Important remarks

Although snowshoeing seems easy, the program requires a normal physical condition, and can be compared to cross-country biking about 5 km distance. Snowshoes come in one size, fits all, just attach them on your own shoes and you're ready to go.

Recommendation

We recommend wearing warm winter clothing. It can be rented separately before the departure from the Safarimarket office in Levi center.



LOCAL CULTURE

Levi Samiland museum, which is under the patronage of UNESCO, tells you about lifestyle and culture of the last remaining indigenous people in Europe - Saami. Museum was built in 2011 by a descendant of famous and powerful Lappish shaman (as they call a wise witch) Mr. Kapin Jouni - Mr. Ante Aikio. Experience the Arts and Culture of a well known Lappish artist Reidar Särestöniemi. Reidar Särestöniemi Gallery was built in 1972 and presents to visitors his remarkable works.



LOCAL CULTURE

ACTIVITIES

VISIT TO SAMILAND MUSEUM

Duration: 1 h

Unique cultural experience of visiting Samiland museum.

Description

Come and meet the Sami, the indigenous people of the North. The Samiland exhibition explores the Sami people's thousands of years of history, culture and mythology. Visit the indoor exhibition to find out about the differences between the Skolt Sami and the Mountain Sami as well as about the traditional occupations and ancient mythical characters of the Sami people. The outdoor exhibition will teach you more about traditional Sami buildings and reindeer herding. Museum was built in 2011 by a descendant of famous and powerful Lappish shaman (as they call a wise witch) Mr. Kapin Jouni - Mr. Ante Aikio.

Part of the exhibition is indoors 500 sq.m. (downstairs of Levi Summit congress center), and bigger part - outdoors 10000 sq.m. on the Levi fell side. In the museums' territory there is a small reindeer corral, where you can feed them with lichen and take pictures of the beautiful nature on the fell side.

Suitability

Any physical condition and age

Included

Basic package: return ticket on Gondola Express from Levi center to Levi Summit, entrance tickets to the museum, bag of lichen for reindeer feeding, tea/coffee in Levi Summit café.

Not included

Warm winter clothing

Important remarks

Daytime during museum opening hours
11.00 - 17.00

Recommendation

Warm winter clothing can be rented separately before the departure from the Safarimarket office in Levi center.



LOCAL CULTURE

ACTIVITIES

VISIT TO SÄRESTÖNIEMI ART MUSEUM

Duration: 3 h

Experience the Arts and Culture of a well known Lappish artist Reidar Särestöniemi

Description

Transfer from Levi center will take about 45 min. You will have a guided tour around Särestöniemi museum to experience the Arts and Culture by visiting home, studio and gallery of a well known Lappish artist Reidar Särestöniemi (1925-1981). Särestö offers peaceful atmosphere with a wide variety of Lappish culture; history, architecture, art and way of living. Reidar Särestöniemi built his Gallery in 1972 because he needed a place where people could see his remarkable work. Natural surroundings and personality of the artist are in the center of the architectural design; Gallery is also designed by acclaimed Finnish architects Reima and Raili Pietila. Main exhibition consists always of several colourful and stunning works from Reidar Särestöniemi - main exhibitions is changed once a year, smaller exhibitions in Studio and Old Särestö are changed in every 3 months. Finish your visit at café-house and enjoy coffee or other warm beverage with a homemade sweet bun.

Suitability

Any physical condition and age

Included

Transfer, guided tour, entrance ticket warm drink and sweet bun in a café

Not included

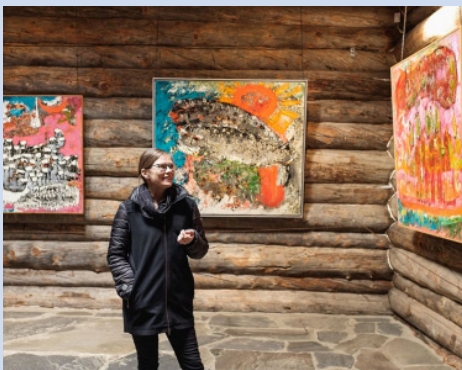
Warm winter clothing, snacks and meals, alcoholic and other drinks in a café

Important remarks

Light walking outside is required

Recommendation

Please note that thermal clothing is not provided for this program. It can be rented separately from the Safarimarket office in Levi center.





ICE FLOATING

This guided floating is totally safe with a high quality rescue suit that covers your whole body and keeps you dry. As you have your own clothing under the suit you will not get cold even in the open 0 degree water. The circumstances are truly arctic! If the weather is clear we can see beautiful stars and may even get to marvel magnificent Northern Lights. Let your mind and body float whilst you enjoy this unique and very cool experience...



ICE FLOATING

ACTIVITIES

ICE FLOATING DURING DAY TIME / EVENING TIME*

Duration: 3,5 h

Let your mind and body float whilst you enjoy this unique and very cool experience

Description

Come and experience the arctic ice floating! Step into the lake, let the calm water carry you and close your eyes...breathe in the pure air and feel your mind and body relax. You will not be cold as you will be totally protected in our high-quality rescue suit designed for the arctic waters. You will also have your own clothing under the suit, it will not get chilly even in the open 0-degree water. Floating on a frozen lake surrounded by snow covered trees 150 km above arctic circle is really something worth trying. Afterwards you can relax and return to the sensation of dry land in a warm private cabin. The host will offer hot berry juice, cookies, tell you about Lapland and answer any questions you may have.

*Come and experience the arctic ice floating in the night! If the weather is clear, the sky will be full of stars! With luck, we get to see the magnificent Northern Lights above and down, reflecting on the water.

Suitability

Normal physical condition and children age 8+ and height 120cm+

Included

Transfer by STG transport only to safari departure point, guided tour (local guide accompanies during the safari, STG guide accompanies guests only to the departure point and meets guests after the program), warm winter clothing, floating suit, hot drinks.

Important remarks

Floating time is approximately 20 min
Minimum height for the floating suits is 120 cm
Max 8 clients at a time in the water for safety reasons.

Privacy level

Fully private





HORSE RIDING

Come and explore the beautiful Lappish nature on horseback with charming Icelandic horses! You can leave all your everyday worries behind and let the small, yet strong horses carry you on the trails through the forest and up the hills to admire the scenery. No previous experience is required for the treks, as horses can also take beginners safely to experience the joy of horseback riding.



HORSE RIDING

ACTIVITIES

ICELANDIC HORSE RIDING ONE HOUR / TWO HOURS

Duration: 1,5 h / 2,5 h

AURORA ICELANDIC HORSE RIDING 1,5 HOURS

Duration: 2 h

ICELANDIC HORSE SLEIGH RIDE

Duration: 45 min

Description

Icelandic Horse stable organizes experiences for people all over the world. We love and respect our beautiful Lappish nature, culture and traditions. The stable is located in the immediate vicinity of Levi Centre but still close to peace and quiet of the forest. We organize riding treks into the countryside for all riding enthusiasts in Levi's wonderful fell scenery. If you are experienced or beginner, you are welcome to come and experience the fascinating world of Lapland with us. The world of snow and fire. The world of thousands of stars and Northern Lights. The world of silence and peace. After ride we warm up with hot drink and a cookie.

Suitability

Normal physical condition and age 12+
Not suitable for children under 12 years old, unless they have previous riding experience.
Maximum rider weight: 95kg

Included

Transfer, guiding, hot drink (berry juice/ coffee/tea), cookies

Not included

Warm winter clothing

Important remarks

Minimum 4, maximum 6 persons

Recommendation

Warm winter clothing can be rented separately before the departure from the Safarimarket office in Levi center

Please provide the riders' weight and riding experience (beginner / advanced / experienced) in advance.

Additional options on the tour:

Smaller kids and accompanying adults can have a horse sleigh ride.

Spectators can join the program depending on available transport capacity subject to supplement charge.

Icelandic horse sleigh ride in the Winter Wonderland. Handsome Black Beauty is taking you to the forest and sleigh bells are jingling. After ride we warm up with hot drink and a cookie.



DAY TRIPS

Explore Lapland outside Levi Ski resort. We offer day trips from Levi to top destinations in Finnish, Swedish and Norwegian parts of Lapland. You can explore lappish nature by visiting Ranua Wildlife Park(Finland), Bothnian Sea (Finland/Sweden) Arctic ocean (Norway), IceHotel(Sweden) and traditions of Saami people by visiting Juhls Silver Gallery in Kautokeino - one of the main cities of Saami people, last aborigines in Europe.



POLAR EXPLORER

ACTIVITIES

CRUISE ON ICEBREAKER «POLAR EXPLORER»

with lunch and transfer

During 4.12.23 - 14.4.24

Duration: 11 h

Description

During this day trip from Levi, you will travel to the Bothnian Sea between Finland and Sweden and board the Icebreaker Polar Explorer. During the tour, you will discover and experience how the icebreaker operates and navigates through the icy waters of the Arctic seas. The Icebreaker is a unique vessel, it was purposefully rebuilt for withstanding the crushing pressure of the frozen waters and ice sheets. In addition, it has a specifically designed hull that is built to break and destroy ice in its path. On board, there are seven stations that you can visit and see how the ship operates. These are for example the engine room, the front (bow) section of the ship and the ship cafeteria. In addition, you are free to visit all sections of the ship, including the Captain's bridge. During the cruise, there will be a one hour stop, during which time you are able to put on some flotation suits and go for a swim in the freezing waters. Due to the nature of your equipment, you don't have to know how to swim: anyone can do it.

Suitability

Any physical condition and age 6+

Included

Transfer, standard cruise ticket, 3 hour cruise on the icebreaker, hot drinks on board, 7 decks guided tour, audio guide in 18 languages, all the gear (warm overall floating suite), film in Icebreaker theatre, Cruise & Swim certificate, lunch in the restaurant onboard

Not included

Warm winter clothing (except the ice swimming gear), snacks, meals on board of the ship. A professional photographer will take photos throughout and offer images for sale at the end.

Important remarks

Snacks and drinks are available for purchase onboard the ship cafeteria. Ice swimming is available for children 140 cm+ accompanied by their parents. Please take you passport along, as we will be crossing over the border to Sweden.



RANUA ZOO

ACTIVITIES

TRIP TO ARCTIC ZOO RANUA WITH LUNCH

Duration: 10 h

Trip from Levi to the largest Wildlife Park in the Arctic region

Description

Ranua Wildlife Park, one of the main highlights of Lapland, offers an opportunity to observe arctic animals throughout the year in an as authentic environment for the animals as possible. The park animals consist of approximately 200 animals across 50 different species. A comfortable guided transfer from Levi to Ranua will take about an 3 hours. Our guide will be accompanying you during the whole trip and share with you some interesting information about Finland and Lapland along the way. Upon arrival, you will have a guided tour around the park. You will have approximately 2 hours in the park. When finished, you will have a lunch in the main restaurant. You can also visit a souvenir shop and "Fazer" chocolate factory store which boasts an endless supply of their chocolate products.

Suitability

Any physical condition and age

Included

Transfer, entrance to the Zoo, lunch in the main restaurant of the Zoo.

Not included

Guided trip around the Zoo with animal feeding.

Recommendation

We recommend wearing warm winter clothing, as the Zoo is located out in the open. Warm clothing and boots can be rented separately from the Safarimarket office in Levi center.

Additional option on the tour:

GUIDED TRIP WITH ANIMAL FEEDING

You will have a guided tour around the park, the local zookeeper will bring some food and feed the animals along the way. This is especially efficient in the polar night winter season, when animals are less active and tend to stay in the hideouts.



KING CRAB SAFARI

ACTIVITIES

KING CRAB SAFARI "FISHERMAN'S DREAM" (BARENTS SEA, NORTH NORWAY)

Duration: 16 h

Description

During this day trip from Levi, you will travel all the way to Arctic Ocean in North Norway to go on a famous KingCrab safari, see Norwegian Fjords, get a taste of a life of Norwegian fisherman, savor a freshly caught and prepared king crab for dinner. Transfer from Levi to Kirkenes (Norway) takes about 6 hours one way. Time on the boat in the fjord about 2 hours.

We will wake you up with a freshly brewed Finnish coffee and tasty breakfast pack in a bus. As we're driving to the North, you'll see a landscape changing from taiga to tundra and after the Norwegian border crossing - fjords and mountains. After we arrive to the Arctic Ocean, we will stop at the peer of the Northern never-freezing fjord. After a briefing about safety rules at sea we will put on the warm floating suits, board on a fisherman's boat and go out on a cruise in the open fjord. When we reach the fishing grounds your captain will lift a big crab pod from the sea bottom full of crabs and release them on the deck. Captain will explain the difference between male and female, and if you're lucky you can taste crab caviar. You can also try deep-sea angling from the boat at the same time. When we return on the shore, captain will prepare a delicious meal of tender crab meat and serve it to you in a cozy fisherman's dining room. After the dinner you will return to Levi by bus.

Suitability

Any physical condition and age 4+

Included

Transport, guiding throughout the whole program, all the gear (warm overall floating suite) on the boat, fjord-cruise on a fisherman's boat, refreshments, dinner in fisherman's room from the freshly boiled king crab with one-two glasses of white wine, taste of sea fishing experience.

Important remarks

This experience is nothing short of authentic. The boat is the same one captain uses for his professional fishing. When the captain takes you to the sea, you can feel the elements: the sprays of water, the wind, the cold... and the smell of fish, of course. You might not be comfortable all the time, but on the way home you know you've done something special, something genuine. Sustainability is a natural part of this experience. The captain doesn't overfish, never exceeds quotas or takes more than he needs.

Crab meat contains a lot of protein, people with allergies to protein and fish should advise us at the time of booking. Persons prone to motion sickness are advised to take the medicine on the trip. Please take you passport along, as we will be crossing over the Finnish border to Norway.

ICE HOTEL

ACTIVITIES

EXCURSION TO ICEHOTEL IN SWEDISH LAPLAND

Duration: 11 h

Day trip from Levi to Icehotel Jukkasjärvi in Swedish Lapland

Description

In this cross-border excursion, our destination village of Jukkasjärvi, 200 km north of the Arctic Circle in Swedish Lapland. Travel time from Levi to Jukkasjärvi is about 4 h one way. Excursion duration, incl. lunch is about 3 h. Icehotel is the world's most famous hotel and an art exhibition made of ice and snow. Founded in 1989, it is reborn in a new guise every winter.

ICEHOTEL 365 is a permanent structure and year-round ice experience in 2,100 m² with 20 luxury suites, each with a heated area of private relax and bathroom, art suites, all sculptured by selected artists, ice bar that serves champagne and drinks, as well as an ice gallery - all created out of snow and ice. This ice experience is cooled by solar panels during the summer months.

At the end of the visit you will have a lunch in ice restaurant, after what you'll go back to Levi.

Suitability

Any physical condition and age 3+

Included

Transport, guiding, entrance tickets and guided tour around the Icehotel and Icehotel 365, lunch in IceHotel restaurant, personal certificate.

Not included

A drink from the ice glass in the icebar: non-alcoholic or alcoholic, winter clothing (warm overalls) and boots.

Important remarks

Please take you passport along, as we will be crossing over the Finnish border to Sweden.

We recommend wearing warm winter clothing. Warm clothing and boots can be rented separately from the Safarimarket office in Levi center.



LAPLAND NORWAY

ACTIVITIES

EXCURSION TO NORWEGIAN LAPLAND

Duration: 11 h

Unique cultural experiences: reindeer racing, traditional saami food, singing + visit to famous silver gallery Juhls

Description

In this cross-border excursion, our destination is Norwegian Kautokeino - one of the main cities of Saami people, last aborigines in Europe. It's located about 3 hours from Levi. First we will visit famous Silver gallery & workshop JUHLs. After visiting silver gallery you will go to a local Saami reindeer herder's camp and get a taste of life of Saami people: you'll sit on the snowmobile sledge and take a ride to the "back yard" of Saami, to the local forest wilderness camp. Here everyone gets a chance to choose his/her own reindeer, which you will use in the first part of competition: racing in a circle driving reindeer sleds. The second part will be lasso throwing. Lucky winners of 3 first places will be awarded prizes. Then you'll be invited inside a tradition Saami home - teepee "laavu", where you will sit around the open fire, taste a traditional meal made by a local Saami family and hear some master's storytelling and joking performance of young Saami girl.

Suitability

Any physical condition and age 3+

Included

Transfer, guiding, tour around the silver gallery, coffee and sweet bun in Juhls café, visit to Saami reindeer camp, competitions: race on reindeer sleds and lasso throwing with prizes, traditional dinner made by locals in Saamen lavu (teepee) with storytelling and joking performance of Saami girl.

Not included in price

Warm winter clothing

Important remarks

Please take you passport along, as we will be crossing over the Finnish border to Norway.

We recommend wearing warm winter clothing. Warm clothing can be rented separately from the Safarimarket office in Levi center.



RESTAURANTS

WE RECOMMEND

King Crab Restaurant

The King Crab House is a unique restaurant, which offers the opportunity to have king crab straight from the aquarium. The meat is local, and the vegetarian raw materials are partly collected from the wild in the area. The restaurant is situated in the heart of Levi by the pedestrian zone in the middle of the town.



Ämmilä

Restaurant Ämmilä offers traditional local food with a modern twist since 2007. Over the years, the restaurant has become famous for its honest and authentic Laplandic à la carte menu as well as its home-cooked lunch buffet. The à la carte menu is based on guaranteed clean and excellent raw goods from producers in the nearby areas.



Pihvipirtti

Since Valentine's Day 1999, this homely restaurant has been a sanctuary for those who love an honest steak. But Pihvipirtti is not famous only for the delicious steaks. The dinner starts with an appetizing cold buffet including fish and seafood selection and ends with mouth-watering home-made pannacotta. The most important part of the dinner, the steak served with sauce and potatoes on side, can be chosen from two sizes and different meats.



Restaurant Utsu

Levi Igloos Golden Crown's popular Restaurant Utsu is in the glass igloo village on the top of the Levi fell. The restaurant is in two floors and atmospheres. The upper floor offers a glass roof restaurant where you can enjoy your dinner on a bright evening under the stars and northern lights. On the ground floor you can enjoy your dinner intimately in the warm glow of the fireplace. Highly qualified restaurant is known for its Scandinavian kitchen, pure flavors and fresh high-quality raw materials. We prefer organic and local products.



RESTAURANTS

WE RECOMMEND

Classic Pizza Restaurant

Classic Pizza Restaurant is relying on the traditions, but at the same time always looking to renew their offering to customers. Comfortable environment, friendly service, stylish menu and delicious food and drink experience.



Restaurant Asia

Restaurant Asia has a versatile selection of Asian delicacies. Have the duck gyozas as an appetizer and the Korean Pork Belly or the Black Garlic Chickent, fresh vegan rolls, crispy pumpkin coated with panko breadcrumbs and sushi varieties.



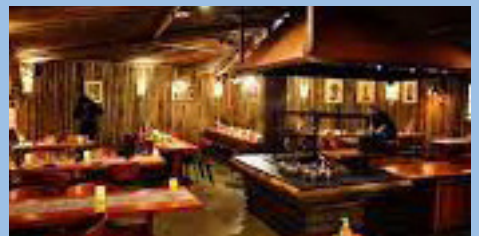
Stefan's Steakhouse

Stefan's Steakhouse serves the best steaks in the Nordic countries. Stefan's Steakhouse is meant for lovers of good food and connoisseurs who don't want to make good things too complicated. Respectful of tradition, the stylish interior is done with a modern and fresh touch.



Saamen Kammi

Lappish dinner by open fire with exotic joikha music and tales of Lapland! Dinner includes delicious fish soup, different reindeer dishes, amazing salmon made by open fire and traditional Lappish dessert!



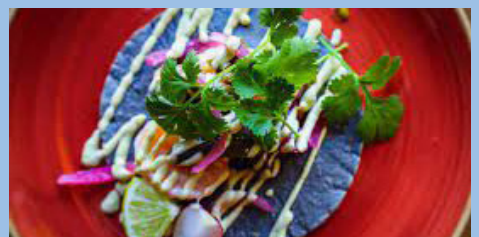
Restaurant Wanha Hullu Poro

A genuine Kopa® charcoal oven sits at the heart of our kitchen where we barbecue our meat at temperatures up to 450 degrees Celsius. Menu offers a wide selection of burgers, as well as meat cooked over an open flame.



Lost Tacos

Lost Tacos tacos are genuine Premium Street Food, which are made to the customer from the very beginning with high-quality ingredients made by ourselves. The menu not only includes tacos, but also a wide variety of Central America dishes.



EXCURSIONS & ACTIVITIES

LEVI LAPLAND

WEEKLY PROGRAMS

WINTER SEASON 2023-2024

All prices include pick up and return transfers from meeting point in Levi center
English-speaking guiding and all taxes.

For more information and booking, visit our web page:

<https://gostg.fi/catalog/destinations/levi/>

NORTHERN LIGHTS 1.11. - 15.4.				
VISIT TO POLARMAN'S CAMP 1.9. - 30.11.; 15.3. - 6.4.	3	79	69	2-11
VISIT TO POLARMAN'S CAMP + SNOW IGLOO PARK 1.12. - 14.3.	3	95	85	2-11
NORTHERN LIGHTS CHECK BY CAR 1.11. - 15.4.	2	85	85	2-11
Child under 2 y.o. to ANY OF NORTHERN LIGHT PROGRAMS	2	-	30	0-1
AURORA CHASE with a Professional photographer 1.11. - 31.3.	4	195	195	-
SNOW HOTELS & CASTLES 25.12. - 31.3.				
VISIT TO LAINIO SNOW VILLAGE	3	85	65	4-14
VISIT TO LAINIO SNOW VILLAGE with dinner in ice restaurant	4-5	155	115	4-14
Child under 4 y.o. to any VISIT TO LAINIO SNOW VILLAGE programs	3-5	-	40	0-3
SNOW BUILDING				
BUILD YOUR OWN SNOW IGLOO 1.12. - 3.3.	3	95	75	6-14
SANTA CLAUS				
DAY-TRIP TO SANTA CLAUS VILLAGE and ROVANIEIMI "Lite" 1.11. - 29.2.	8-10	135	125	3-12
DAY TRIP TO SANTA CLAUS VILLAGE and SANTA PARK with lunch 11.11. - 13.1.	10	165	145	3-12
Child under 3 y.o. to any DAY TRIP TO SANTA CLAUS programs	8-10	-	50	0-3
MEET SANTA CLAUS and MRS. CLAUS in a SECRET HIDEAWAY in LEVI (December - January)	2	110	110	2-11
MEET SANTA CLAUS in a SECRET HIDEAWAY in LEVI (November and February)	2	135	135	2-11
Child under 2 y.o. to MEET SANTA CLAUS HIDEAWAY program	2	-	30	0-1
CHRISTMAS THEME PROGRAMS				
ELVES KINGDOM AND SANTA CLAUS WORKSHOP	3.5	135	135	2-11
A MAGICAL WINTER ADVENTURE IN ELVES VILLAGE	2.5	60	60	2-11
VISIT the ELVES KINGDOM and EXPLORE on YOUR OWN (entrance tickets, no program). Year round, except on closed-out dates in December.	2.5	45	45	2-11

AMAZING HUSKIES 1.12. - 6.4.				
Animals Movie Stars & Husky Park visit 1.10. - 30.11.; 1.4. - 30.4.	1.5	65	55	2-11
HUSKY PARK and musher-driven safari 2 km 16.1. - 31.3.	2	105	79	2-11
HUSKY PARK and musher-driven safari 2 km 1.12. - 15.1.	2	115	89	2-11
HUSKY PARK and musher-driven safari 4 km 16.1. - 31.3.	2	145	99	2-11
HUSKY SAFARI self-guided 5 km	2.5	129	99	2-11
HUSKY SAFARI self-guided 10 km	3	179	119	2-11
HUSKY SAFARI self-guided 20 km	3,5 - 4	260	260	12+
Supplement for a single sledge HUSKY SAFARI self-guided 5-10 km	-	90	-	15+
Child under 2 y.o. to ANY OF THE HUSKY program	2	-	30	0-1
EXOTIC REINDEERS 1.12. - 6.4.				
REINDEER EXPRESS SAFARI	2	79	59	2-11
LAPPISH VILLAGE REINDEER SAFARI	2	105	89	2-11
SUPER REINDEER SAFARI 50 min	2.5	105	75	2-11
Child under 2 y.o. to ANY OF THE REINDEER PROGRAMS	2	-	30	0-1
SNOWMOBILES (SNOWSCOOTERS) 1.12. - 6.4.				
SNOWMOBILE SAFARI "LAPPISH CIRCLE"	2.5	109	65	2-12
NIGHT SNOWMOBILE SAFARI "IN SEARCH OF NORTHERN LIGHTS"	3	129	89	2-12
FAMILY SNOWMOBILE SAFARI	3	149	99	2-12
SNOWMOBILE SAFARI WITH ICE FISHING	3.5	190	99	2-12
SNOWMOBILE SAFARI TO THE REINDEER FARM	3.5	190	99	2-12
ADRENALIN SNOWMOBILE SAFARI (1 person per snowmobile)	3.5	185	-	-
SINGLE SNOWMOBILE SUPPLEMENT FOR ANY SAFARI <i>- supplement per person (except Adrenalin safari)</i>	-	49	-	-
ELECTRIC SNOWMOBILE SAFARI. Daytime	2	146	109	2-12
ELECTRIC SNOWMOBILES SAFARI. Night time	3	196	147	2-12
SINGLE SNOWMOBILE SUPPLEMENT ON ELECTRIC SNOWMOBILE SAFARIS <i>- supplement per person</i>	-	70	-	-
SNOWSHOEING 1.11. - 15.4.				
EASY SNOWSHOEING (EASY level)	2	59	39	8-12
INSTAGRAM SNOWSHOEING TO SANTA'S CABIN (EASY - MODERATE level)	2,5 - 3	85	85	8+
NIGHT SNOWSHOEING HUNTING FOR AURORA (EASY level)	2.5	85	85	12+
OTHER PROGRAMS 1.11. - 15.4.				
VISIT to SAMILAND MUSEUM Basic package	2	45	35	7-16
VISIT to SÄRESTÖNIEMI ART MUSEUM	3	85	75	7-16
Child under 7 y.o. to VISIT TO SÄRISTÖNIEMI ART MUSEUM	3	-	50	0-6
ARCTIC ICE FLOATING. Daytime, starting 3.1.2024	3	104	78	4-14

AURORA ICE FLOATING. Evening time, starting 1.1.2024	3	109	82	4-14
HORSE RIDING 1.11. - 15.4.				
ICELANDIC HORSE RIDING - ONE HOUR	1.5	85	85	12+
ICELANDIC HORSE RIDING - TWO HOURS	2.5	110	110	12+
AURORA ICELANDIC HORSE RIDING 1,5 h	2	120	120	12+
ICELANDIC HORSE SLEIGH RIDE 30 MIN	1	65	65	12+
SPECTATOR, ICELANDIC HORSE SLEIGH RIDE 30 MIN	1	30	30	12+
WINTER SPORTS 15.11. - 6.4.				
ICE KARTING	1.5	80	80	-
ICE KARTING with lunch	2	95	95	-
SNOWTUBING TICKET	1.5	15	15	-
SPECTATOR, ANY OF ICE KARTING PROGRAMS	1	30	30	
E-FATBIKE RENTAL FOR DAY 10-17	7	80	80	-
LEVI FELS AND FOREST ON E-FATBIKE with a guide	3	115	115	-
HUNTING FOR AURORA ON E-FATBIKE with a guide	3	125	125	-
DAY TRIPS				
CRUISE ON ICEBREAKER "POLAR EXPLORER" with lunch and transfer from Levi 4.12. - 14.4.	11	495	450	4-12
Child under 4 y.o. to ICEBREAKER program	8-10	-	70	0-3
TRIP TO ARCTIC ZOO RANUA with lunch	10	215	185	3-12
Child under 3 y.o. to TRIP TO ARCTIC ZOO RANUA program	8-10	-	70	0-2
KING CRAB SAFARI "FISHERMAN'S DREAM" (BARENTS SEA, NORTH NORWAY)	12	550	430	3-12
EXCURSION to ICEHOTEL in SWEDISH LAPLAND	11	325	280	3-12
EXCURSION to NORWEGIAN LAPLAND 1.11. - 15.4, except for closed-out period 23.12 - 4.1. <i>Unique cultural experiences: reindeer racing, traditional saami food, singing + visit to famous silver gallery Juhls</i>	11	325	280	3-12
Child under 3 y.o. to KING CRAB, ICEHOTEL AND NORWAY program	8-10	-	100	0-2
WARM WINTER CLOTHING RENTAL 1.11. - 15.4.				
WARM WINTER CLOTHING RENTAL by STG - STG-branded clothing includes: one-piece overall and boots. Suitable for average temperature -15 C Price per person per 24 hrs.		15	15	-
When rented for our Polarman's camp program (for duration of program)		5	5	
When rented for any other of our programs (for duration of program)		10	10	
Price per person per week.		50	50	
WINTER WARM WINTER CLOTHING SET RENTAL - Non-branded clothing set includes: jacket, pants, boots, mittens. Suitable for average temperature -15 C Price per person per day (first day).		35	35	-
Price per person per additional day.		12	12	
Price per person per week.		79	79	
Delivery fee in Levi area (radius 20 km from Levi center) for one way		45	45	



WELCOME TO LEVI!

